



Flat 15, Heathside

Heathside, NW11 7SB



Flat 15 is a lovely two-bedroom first floor retirement apartment. The property boasts a spacious bright lounge with direct access to the west facing balcony which overlooks the front gardens. The lounge has lots of built in shelving and storage. The modern fully fitted kitchen has a hob, built in oven and microwave, dishwasher, ample cupboard space and an area for dining.

Heathside is a luxurious well-maintained development, ideally located on the corner of Finchley Road and West Heath Avenue and a short walk to Golders Hill Park and Hampstead Heath. It is close to Golders Green tube station (Northern Line), which provides 15-minute access to Central London and includes numerous local buses and a National Express bus terminal with links across the UK and Europe. There are a variety of shops and restaurants, and Brent Cross Shopping Centre is nearby.

Heathside benefits from parking and landscaped communal gardens that get the sun in the morning.

Accommodation:

- Spacious lounge
- Modern Fitted Kitchen with hob, dishwasher, microwave and oven
- Master Bedroom with dual aspect windows and lots of built in storage
- Single Bedroom with fitted shelves and a free standing wardrobe
- Bathroom with walk in shower, large wall mounted mirrored cabinet, modern wash basin, WC and heated towel rail
- Guest WC
- Utilities cupboard with Bosch washing machine and a Bosch tumble dryer
- Walk in Storage cupboards in hallway
- Large, elegant mirror in the entrance
- Entry phone system

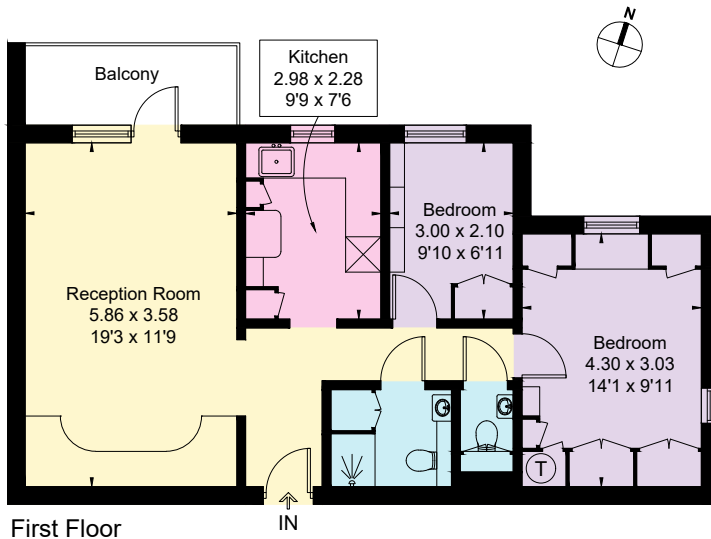




Heathside has:

- ✓ Luxurious guest suite
- ✓ Hairdressing salon
- ✓ Modern fully fitted communal kitchen for entertaining
- ✓ Relaxing and comfortable communal lounge
- ✓ Landscaped front and rear gardens
- ✓ Ample on-site parking
- ✓ 2 Lifts
- ✓ House Manager
- ✓ Caretaker/Handyman
- ✓ 24 hour emergency call system.





First Floor

Approximate gross internal area: **62.5 sqm / 673 sq ft**

Leasehold: **Lease 189 years from March 1985
(approx. 150 years remaining)**

Ground rent: **£60 per annum**

Local Authority: **London Borough of Barnet (Band F)**

Energy Performance Rating: **C**

Offers in region of:
£575,000

To arrange a site visit, please contact

Karen Forbes on **0208 458 8700** or heathside@ospreymc.co.uk / Website: www.ospreymc.co.uk

These particulars are for general information only and do not constitute any part of an offer or a contract. All statements contained herein are made without responsibility on the part of Osprey or the Vendors or Lessors and are not to be relied on as a statement or representation of fact. Intending purchasers or lessors must satisfy themselves or otherwise as to the correctness of each of the statements contained in these particulars. Osprey has not tested any of the appliances in this property.